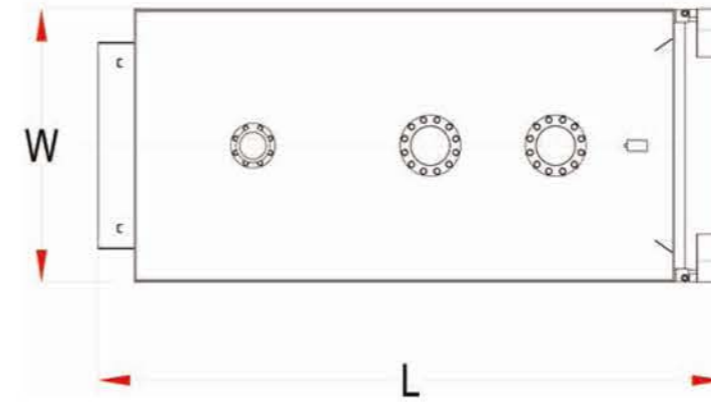


Pressurized steel boiler for hot water production.
It can be equipped with a normal market burner and is suitable for liquid or gaseous fuels. Two-position adjustment or, on request, modulating. Water efficiency of over 90%.

HOT WATER BOILER
RS
MODEL



PRODUCT

Hot water boiler

TYPOLOGY

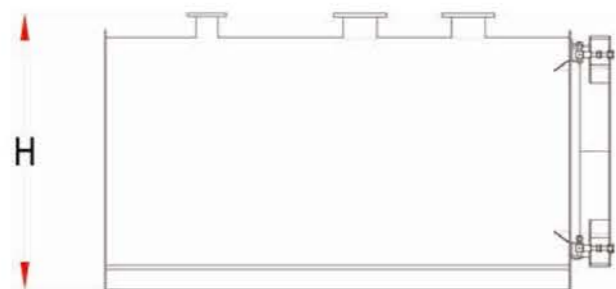
Fire tube – 3 passes – wetback – Flame inversion – Horizontal

CAPACITY

150 kw - 5000 kw

TECHNICAL DATA HOT WATER BOILER			RS Series						
TYPE		RS150	RS250	RS400	RS500	RS700	RS1000	RS1400	RS1700
Max net output	kW	150	250	400	500	700	1000	1400	1700
Max furnace output	kW	165	275	440	551	771	1101	1541	1872
Water content	liters	151	203	398	462	671	836	1242	1617
Design pressure	bar	6	6	6	6	6	6	6	6
Efficiency	%	90.6%	90.3%	91.5%	91.6%	91.6%	91.5%	91.5%	91.6%
Furnace pressure drop	mm H2O	8	18	29	43	51	49	67	73
Length (burner excluded)	L - mm	1,385	1,437	1,606	1,801	1,989	2,379	2,686	3,151
Width	W - mm	760	860	890	890	1122	1122	1352	1462
Height	H - mm	812	937	1485	1485	1540	1540	1540	1650
Empty weight	kg	349	485	796	919	1341	1553	2030	3280





TECHNICAL DATA HOT WATER BOILER		RS Series							
TYPE		RS1700	RS2000	RS2500	RS3000	RS3500	RS4000	RS4500	RS5000
Max net output	kW	1700	2,000	2,500	3,000	3,500	4,000	4,500	5,000
Max furnace output	kW	1872	2202	2,741	3,280	3,825	4,371	4,838	5,422
Water content	liters	1617	2,086	2,324	2,667	4,142	4,455	6,012	6,012
Design pressure	bar	6	6	6	6	6	6	6	6
Efficiency	%	91.6%	91.7%	91.7%	91.5%	91.5%	91.5%	93.0%	92.2%
Furnace pressure drop	mm H2O	73	65	76	60	74	80	8	110
Length (burner excluded)	L - mm	3,151	3,225	3,545	3,835	3,879	4,279	4,282	4,282
Width	W - mm	1462	1,622	1622	1,720	1,970	1,970	2,088	2,088
Height	H - mm	1650	1,810	1,810	1,990	2,271	2,271	2,533	2,533
Empty weight	kg	3280	4,145	4465	5,110	6,700	7,500	8,400	9,408

14 M. Zaky Mounir St. Makram Ebaid ,Nasr City ,Cairo.
 HotLine.: (+202) 15298
 Fax: (+202) 23497375
 Mob.: 0100 6109735
www.heatcogroup.com
sales@heatcoheatcogroup.com